

Bona® Portable DCS 2.0

Operating Manual



Bona®

Bona®

For a new manual contact:
Bona US

2550 S. Parker Rd.
Suite 600
Aurora, CO 80014-1622

Tel +1 303.371.1411
+1 800.872.5515
Fax +1 303.923.1461
www.bona.com

Table of Contents

Foreword	2
Table of Contents	3
Technical Data	4
Material Specification	5
Safety Instructions	6
Handling & Operation	8
Assembly and operation	8
Characteristics	8
Maintenance & Service	9
Longopac bag change	9
Longopac magazine replacement	10
Cleaning the coarse filter	11
Replacing the coarse filter	11
Replacing the HEPA13 filter	12
Manometer function	12
Troubleshooting	13
Warranty	14

Motor:	2 x 1200w
Voltage (± 10%):	115 VAC
Frequency:	50/60Hz
Recommended Fuses:	20A
Max Flow:	235 CFM
Max Vacuum:	96" of water lift
Hose:	33ft. x ø1.97"
Coarse Filter:	10 sq. ft.
HEPA Filter:	H13 16 sq.ft.
Noise Level:	80 dB(A)
Bag System:	Longopac® 65 ft.
Length/Width/Height:	31"x 23"x 45.5"
Weight:	106lb
Dust Capacity:	70L / 18.5G
Hour Meter:	99,999 hrs

We congratulate you on your purchase of the Bona Portable DCS 2.0.

Read the complete user manual carefully before using the machine. If anything is unclear you can obtain help from your authorized Bona dealer. You can also visit bona.com to find manuals, schematics and spare parts.

IMPORTANT! This Operator's Manual only concerns Bona Portable DCS 2.0 which may only be used for handling dry, non-explosive materials. Bona Portable DCS 2.0 is designed to handle wood dust when sanding floors and vacuuming with Bona's equipment. Bona disclaims all responsibility if the Bona Portable DCS 2.0 is used for other purposes or is handled differently than described in this Operator's Manual.

The Bona Portable DCS 2.0 requires 14-15amps. Bona recommends plugging the unit into a 20amp plug to avoid tripping breakers and other electrical issues.

Pay special attention to the Safety Instructions. Read the Operating Manual before starting to use Bona Portable DCS 2.0.

Material Specification

When unpacking the machine, check that the following items are included:

Key	Article
A	Bona Portable DCS 2.0
B	2" x 33' Vacuum Hose
C	35' 20amp Twist Lock Power Cable
D	Longopac® sealing zip ties (60pcs)
E	Extra Longopac
F	Hose Connector (38-50mm)
G	Hose Connector (50mm)
H	Hose Lock (60mm)
I	Hose Lock (45-50mm)
J	Wand (38mm, 3pc)
K	Floor Tool (ø38 x 300mm)
L	Rubber Crevice Tool (ø38 x 300mm)
M	Scissors
N	Velcro one wrap strap (10pcs)
O	Operating Manual





DANGER means: You or other staff can suffer a serious injury or death if the instructions marked with *DANGER* on this machine or in these user instructions are ignored or not followed. Read the entire user manual before you use the machine.



WARNING means: You or other staff can suffer an injury if the instructions marked with *WARNING* on this machine or in this user manual are ignored or not followed. The machine or other property may also be damaged if instructions marked with *WARNING* are ignored.



EXPLOSION DANGER! Explosion can occur if statements with this sign are not followed or are ignored by you or other personnel.

Read through the safety instructions carefully and educate your employees and users so no one is harmed while using the machine. The manufacturer is not liable for personal injury or machine damage due to incorrect operation of the machine. The machine may only be used by authorized persons that have been trained in its function.

NOTE: Children should be supervised to ensure that they do not play with the appliance. This machine is not intended for use by persons (including children) with reduced physical, sensory or mental capabilities, or lack of experience and knowledge.



Under adverse conditions, a mixture of dust and air can be explosive. Sanding/buffing wooden floors can create an environment that can be explosive. The following safety routines must be followed:

- Cigarette lighters, control lamps and all other sources of ignition can cause explosions if they are active during sanding. All sources of ignition should be extinguished or, if possible, removed completely from the work area.
- In work areas with poor ventilation, an explosive environment can occur if certain flammable materials (solvents, thinners, alcohol, fuel, certain polishes, wood dust, etc) are in the atmosphere. Floor grinders can cause slightly flammable materials and vapors to burn. Read the manufacturer's label on all chemicals to be used so that you can determine the flammability. Ensure that the work area always has good ventilation.
- Remove contents of the dust bin when the bin is full. Remove the contents of the dust bin each time you finish using the machine. Never leave the dust bin unattended with sanding dust in it. Do not empty the contents of a dust bag into a fire.
- Hitting a nail during sanding can produce sparks and cause an explosion or fire. Always use a hammer to pound in any metal pieces before sanding the floor. Always keep a fire extinguisher (ABC-class or water) available.

Safety Instructions (Cont.)



Damaged, crushed or cracked cables can be dangerous and should be replaced immediately. Risk of personal injury.

Do not connect the machine to an un-grounded socket. Risk of personal injury.

Do not vacuum burning or smoldering particles as the machine can catch fire. If a fire should break out, pull out the plug from the socket and extinguish using the available fire fighting equipment.



The machine must not be used in environments where explosive gas can occur. Large risk for explosions.



Make sure that the foundation is solid so the Bona® Portable DCS 2.0 doesn't tip over. Risk of personal injury and property damage.

Be cautious when handling the toggle fasteners, cleaning unit and cyclone. Risk of pinch injuries.

Do not look into the suction pipe or suction hose if blocked. Large risk of injury to the eyes.

Do not point the suction hose towards body parts when the machine is running. Avoid placing your hand or other parts of the body against the suction inlet if the suction hose is not fitted. Risk of personal injury.

Do not vacuum water, oil or any other liquids.

While lifting the machine, make sure that the dust container is emptied and that no person is under the lifted machine. Risk of personal injury and property damage.

Remove the plug from the wall socket when carrying out maintenance work. Reassemble all guards on the motor and fan components once servicing is complete. Risk of personal injury.

Health impairing dust can be spread when cleaning the coarse filter and during filter and bag replacement. Accordingly, the user should wear tight fitting clothing, protective glasses, protective gloves and a breathing mask conforming to protection class P2.

Do not make holes in any filter. Risk of dust dispersion.

Assembly and operation

1) Connect the power cable to the correct wall outlet.



2) Assemble the hose to the Bona Portable DCS 2.0 (A, B) and to the sanding machine or floor wand.



3) To start the Bona Portable DCS 2.0 push the switch.



Characteristics

The dust extractor separates material in three stages:

The first stage consists of a cyclone separator, where all coarse material is separated before reaching a filter. The second stage consists of a folded coarse filter that filters out the fine visible dust. The third stage, final filtering, uses a HEPA13 filter, which separates the health-impairing dust which is not visible to the eye.

Coarse filter characteristics

The coarse filter is strong and very stable. Low pressure drop with extremely good separation. In order to attain maximum capacity from the dust extractor it is important that the filter is cleaned (see instructions for "Cleaning the Coarse Filter") or replaced as soon as the suction effect starts to drop. It is recommended to change the filter 2-3 times per year.

HEPA13 filters operating characteristics

The Hepa13 filter is dimensioned for fine, dry dust and should be preceded by a pre-filter.



HEPA13 filter cannot be cleaned and must be replaced when spent. The operating stability of the HEPA13 filter drops and can be completely destroyed if exposed to water. It is recommended to change the HEPA filter 1-2 times per year.

Motor and vacuum pump

The dust extractor is equipped with two 1-phase motor with a direct mounted vacuum pump. The motor is cooled by a separate cooling fan.

Maintenance & Service

Longopac bag change



Health impairing dust can be spread when cleaning the coarse filter and during filter and bag replacement. Accordingly, the user should wear tight fitting clothing, protective glasses, protective gloves and a breathing mask conforming to protection class PFF3 or NIOSH approved N95 Dust Respirator Mask.

Particles and dust fall down into a transparent dust container under the cyclone separator. Inside the dust container is a Longopac bag hose system which should be replaced when full. The system consists of a 65 ft folded plastic hose, which gives about 20 dust free bag changes.

1) Seal the bag with two cable ties.



2) Cut between the cable ties.



3) Pull out a new bag from the Longopac.



Longopac magazine replacement

To replace the Longopac magazine lock the wheel brakes, then:

1) Cut the bag open.



2) Loosen the straps.



3) Pull out the magazine.



4) Remove the gasket and discard the Longopac rest.



5) Place a new magazine and check the opening.



6) Cut off the sealers.



7) Fold the inner Longopac over the edge.



8) Mount the gasket.



9) Turn the magazine over and pull out a new bag.



10) Put the magazine in place.



11) Attach the straps.



12) Seal the bag with a sealer and cut off any excess.



NOTE: Always clean the tank of loose particles before you start the machine again! Otherwise, the HEPA filter could be damaged or clogged.

Maintenance & Service (Cont.)

Cleaning the coarse filter

In order to get maximum suction capacity the dust extractor is equipped with a cleaning valve which effortlessly cleans the coarse filter.

1) Start the machine.



2) Block the suction hose by the work place. Wait about 7-10 sec. while the machine builds up a vacuum.



3) Press the filter cleaning valve hard.



Clean the filter every time you start and before you stop the machine. Repeat steps 3 times for each cleaning.

Replacing the coarse filter

1) Open the cyclone lid.



2) Remove the lid.



3) Replace the coarse filter and place old filter in a plastic bag.



Replacing the HEPA13 filter

1) Remove lid.



2) Loosen the nuts.



3) Remove filter using a plastic bag.



4) Seal the bag.

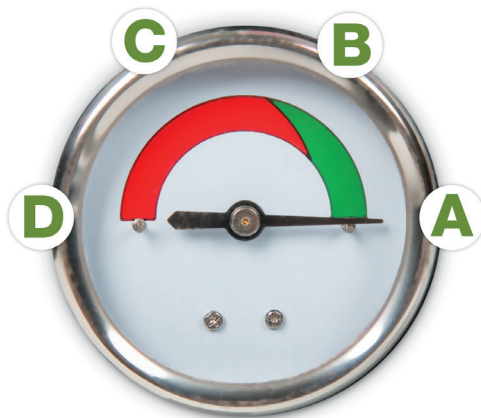


5) Place a new filter.



Manometer function

Bona Portable DCS 2.0 is equipped with a manometer for monitoring the filter conditions. The meter displays the machine's filter status but it will also react to external load (added hoses, etc). Due to this the machine will respond to the total load. This means that the meter will be allowed into the red area as shown below.



A	Either no load is added or the filter is clean.
B	Clean the coarse filter using the filter cleaning valve.
C	Remove the coarse filter for a more thorough cleaning.
D	You are likely getting minimal or no vacuum. Check/change the filter, then check the hoses and seals.

Troubleshooting

Problem	Cause	Solution
Motor is not running	<ul style="list-style-type: none"> _____ No power _____ Broken/damaged cable _____ Broken/damaged switch 	<ul style="list-style-type: none"> _____ Check/change power supply _____ Check/change connections _____ Check/change switch
Motor stops after start	<ul style="list-style-type: none"> _____ Wrong fuse 	<ul style="list-style-type: none"> _____ Replace the fuse
Motor is running but there is no suction	<ul style="list-style-type: none"> _____ The hose is not connected _____ The hose is blocked/clogged 	<ul style="list-style-type: none"> _____ Connect the hose _____ Suck out the blockage backwards
The motor is running but there is inadequate suction	<ul style="list-style-type: none"> _____ Hole in the hose _____ Clogged filter _____ Worn seals 	<ul style="list-style-type: none"> _____ Replace the hose _____ Clean/change the filter _____ Check/change worn seals
The machine is leaking dust	<ul style="list-style-type: none"> _____ The filter is loose or damaged 	<ul style="list-style-type: none"> _____ Check/change filter
Dust in the HEPA filter	<ul style="list-style-type: none"> _____ Leak in Longopac or Longopac-holder cyclone 	<ul style="list-style-type: none"> _____ Check that Longopac bag is sealed properly and has no holes; check the seal between Longopac-holder and cyclone.
Abnormal machinery sounds	<ul style="list-style-type: none"> _____ Variable 	<ul style="list-style-type: none"> _____ Order service

Register your Bona Portable DCS 2.0 online at bona.com/register

This Bona product is warranted to be free from defects in materials and workmanship under normal use and service for a period of two years from date of purchase when operated in accordance with the instructions included.

This warranty is extended only to the original purchaser for use of this product. It does not cover normal wear and parts such as dust collector bag, electronic components, electrical cords, brushes or rubber parts.

If a problem occurs with this product, you should contact your nearest Bona Distributor, or the Bona USA, Inc. office for the authorized repair location closest to you. All freight costs in shipping the machine to the repair location are to be paid by the purchaser.

Bona USA, Inc.'s liability under this warranty is limited to repair of the product and/or replacement of parts and is given to the purchaser in lieu of all other remedies, including incidental and consequential damages.

There are no other warranties express or implied.

Bona[®]

2550 S. Parker Rd.
Suite 600
Aurora, CO 80014-1622

Tel +1 303.371.1411
+1 800.872.5515
Fax +1 303.923.1461
www.bona.com

Bona[®]

REV090816

bona.com
800.872.5515