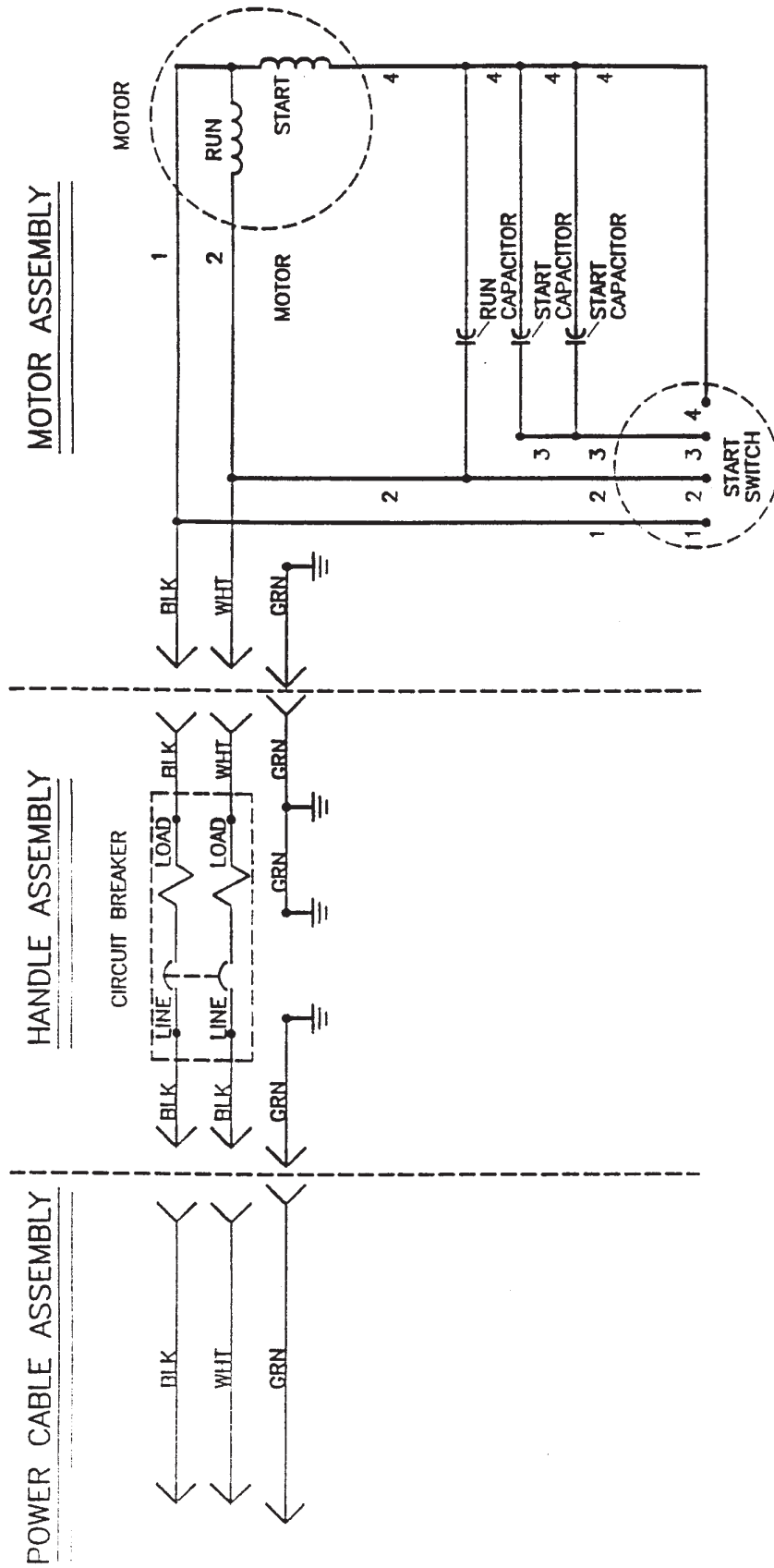
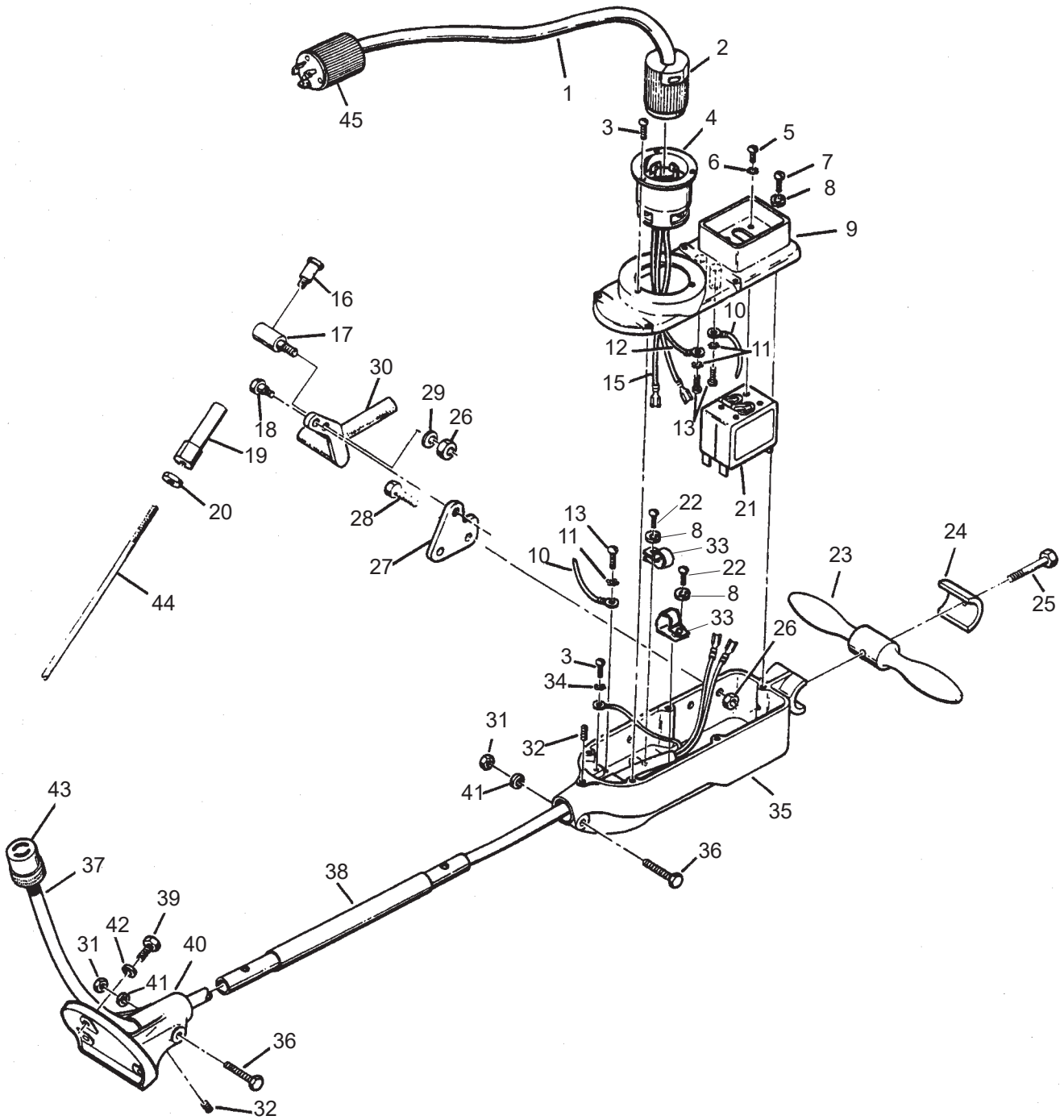


Wiring Diagram



Handle Assembly

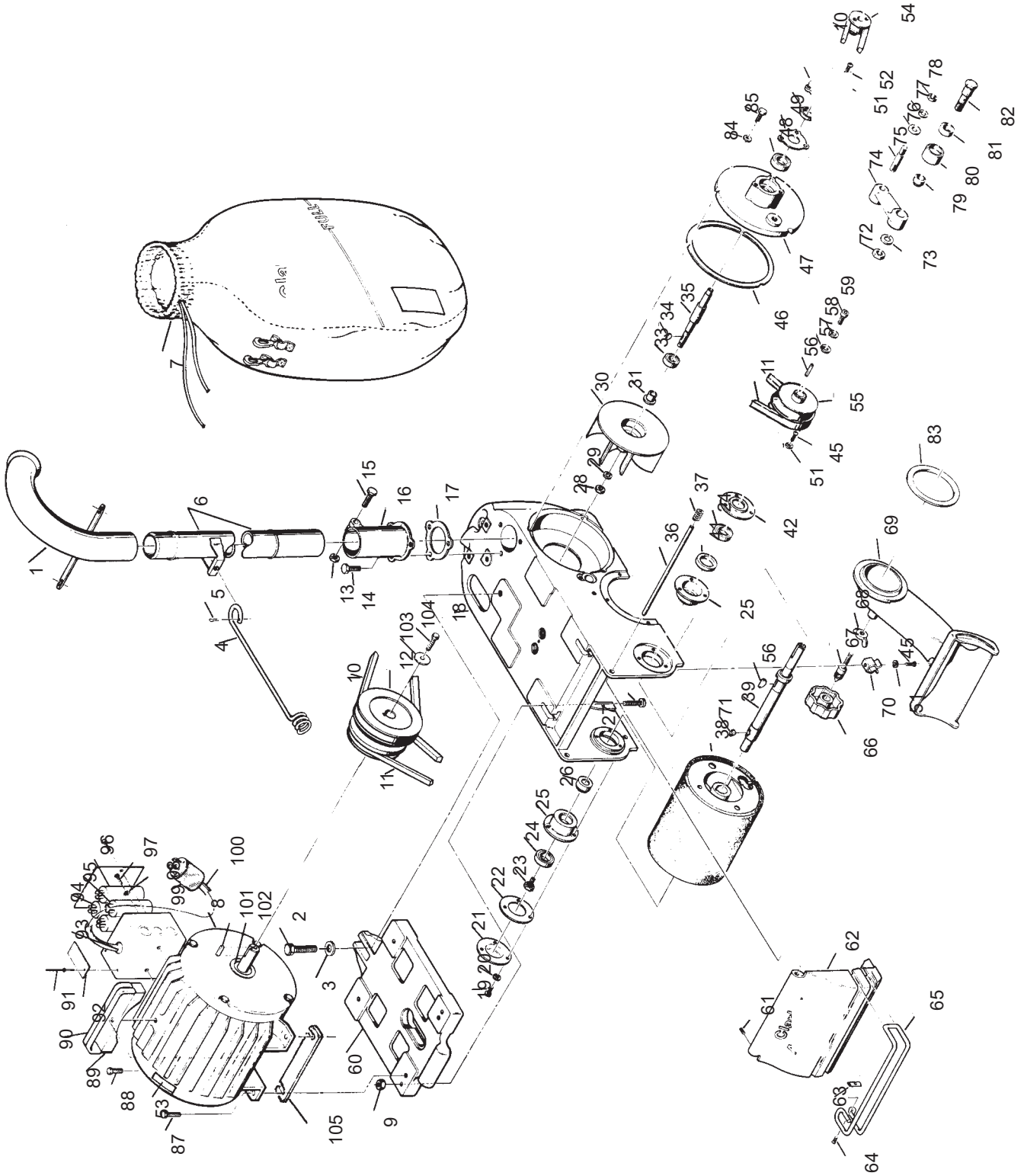


Handle Assembly

Item	Ref. No.	Qty	Description
1	ref	1	Cord Set
2	41706A	1	Connector
3	962065	4	Screw- 8-32 x ¼ Pn St Mach
4	43501A	1	Inlet - 20A, 250V
5	962070	4	Screw- 6-32 x ¼ PnS t Mach
6	980607	4	Washer - #1106 Shakeproof
7	962794	5	Screw- 10-24 x 1
8	980650	7	Washer - ⅜ Lock
9	22127C	1	Cover- Switch Housing
10	48901A	1	Wire Assembly - Green
11	980699	3	Washer- #1210 Shakeproof
12	48900A	1	Wire Assembly Ground
13	85393A	3	Screw- 10-24 x ¼ Pn St Mach
15	49023A	2	Wire Assembly - Black
16	80021A	6	Bolt ⅜ x ⅝
17	66151A	1	Pivot Control Rod
18	80022A	1	Bolt, Shoulder ½ x ⅝
19	67129A	2	Adjuster, Control Rod
20	920148	1	Nut ⅜ -16
21	41411A	1	Switch- Circuit Breaker
22	85517A	2	Screw- 10-24 x ½
23	64405A	1	Handle - Steering
24	21904C	1	Clamp
25	85818A	1	Screw ⅝ -18 x 2½ Hex St
26	920284	2	Nut ¼-20
27	66694A	1	Plate, Control Lever
28	85393A	2	Screw ¼-2 x 1¼
29	980646	1	Washer ¼
30	25602A	1	Lever, Control
31	920256	3	Nut- ⅝-18 Hex
32	86200A	2	Screw ⅝ -16 x ⅝ St St Dogpt
33	51074A	2	Clamp-Cord
34	980621	1	Washer- .1681 x .3700 SH 1108
35	20704C	1	Housing- Switch
36	85816A	2	Screw- ⅝ -18 x 1¼
37	41917A	1	Cord - Interconnecting
38	66116C	1	Pipe - Handle
39	962288	3	Screw- ⅝ -16 X 1" Hex St Mach
40	21105C	1	Mount - Handle
41	980652	2	Washer- ³¹⁹ / ₁₀₀₀ X ²³⁹ / ₅₀₀ X ³⁹ / ₅₀₀ St Lk
42	980638	3	Washer - ⅝ Lt Spring Type
43	41707A	1	Connector
44	67143A	1	Rod Control
45	45608A	1	Plug
[]	56380639	1	Decal, Prop 65

[] = Not Shown

Base Assembly - 1

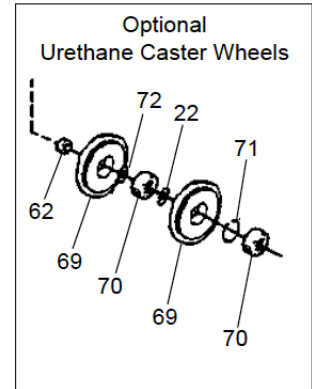
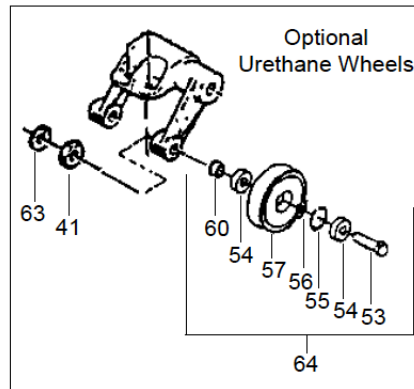
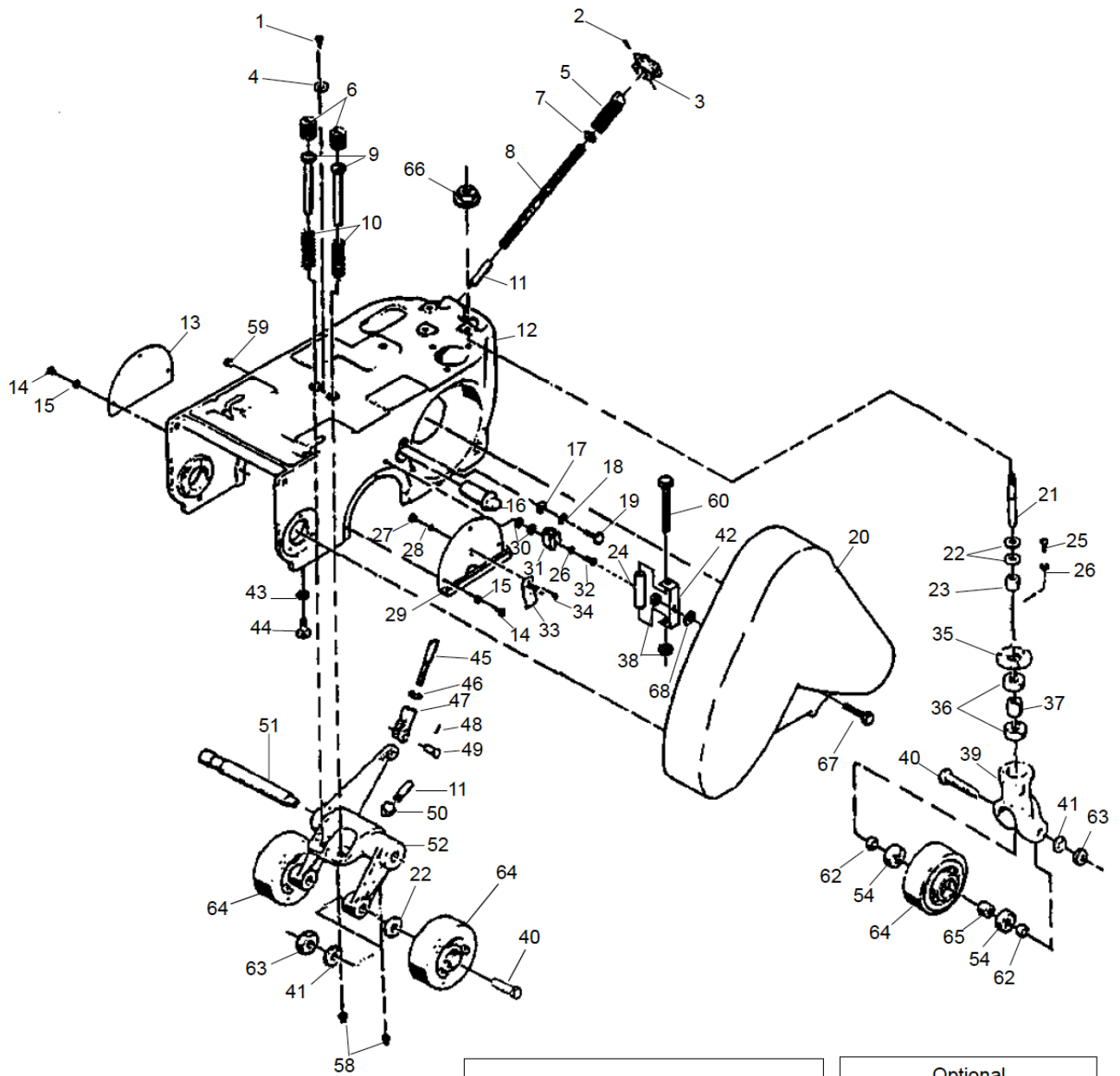


Base Assembly - 1

Item	Ref. No.	Qty	Description	Item	Ref. No.	Qty	Description
1	62800A	1	Pipe - Assembly	52	962823	3	Screw - ¼ - 20 x ½ Pn St Mach
2	85706A	1	Screw - ½ - 13 x 1¼ Hex St	53	77234A	1	Label, Lifting Warning
3	87006A	1	Washer - 1½ X 1 19/60 X 1 1/100 Flat	54	66169A	1	Pulley - Fan Shaft
4	60401A	1	Arm-Cable	55	66167A	1	Pullet Drum
5	925036	1	Pin - Cotter	56	80501A	2	Key - 5/16 Sq. x 1¼
6	66110A	1	Pipe Assembly	57	68703A	1	Washer Drum Pulley
7	50954A	1	Dust - Bag	58	980652	1	Washer - 319/1000 X 293/600 X 39/600
8	44639A	1	Motor 230/60	59	962258	1	Screw - 5/16-18 x 1" Soc Cap
	44640A	1	Motor 240/50	60	AS019300	1	Platform Motor
9	920260	2	Nut- 3/8-16 x 5/16 Hex	61	962262	1	Screw - 8-32 x ¼ St St Cup Pt
10	50920A	1	Belt-V	62	22101A	1	Cover-Drum
11	51024A	1	Belt-V	63	62404A	1	Clamp- Bumper Rear
12	66168A	1	Pulley- Motor	64	962348	1	Screw- 10-24x ½ Flat St Cap
13	920256	1	Nut 5/16 - 18 Hex	65	31210A	1	Bumper - Drum Cover
14	85820A	3	Screw- 3/8-16 x 5/8 Hex St Cap	66	26900A	1	Ring - Lock-Pan-Dust
15	85816A	1	Screw- 5/16-18 x 1¼ Hex St Flt	67	67311A	1	Screw
16	27801C	1	Support - Dust Pipe	68	81900A	1	Nut - 7/16 -14 Hex St
17	34223A	1	Gasket - Pipe Support	69	26100A	1	Pan - Dust
18	23405B	1	Frame - Main	70	61600A	1	Clip - Dust
19	962016	3	Screw- 10-24 x ½ Pn St Mach	71	65301A	1	Key #606
20	980650	3	Washer - 19/100 x 17/60 x 1/25 Lock	72	920280	1	Nut- 5/8 -18 x 3/8 Hex Jam
21	62608C	1	Cover - Housing Drum	73	87102A	1	Washer - 31/60 x 1 1/100 x 1/25
22	54305A	1	Gasket	74	20400B	1	Arm Idler
23	67316A	1	Screw- Drum Lock	75	68000A	1	Stud - Idler
24	51110A	2	Bearing- Ball	76	87005A	1	Washer - 13/25 x 1 Flat
25	64703A	2	Housing- Bearing Shaft	77	87101A	1	Washer - ½ Lock
26	67811A	1	Spacer - Drum	78	920132	1	Nut- ½-20 Hex Jam
27	69032A	2	Screw - Motor Locating	79	67813A	1	Spacer - Idler Bearing
28	81202A	1	Nut - 7/16-14H exL .H.	80	67701A	1	Sleeve- Idler
29	87002A	1	Washer - 47/100 x 47/60 x 3/60 Flat St	81	902550	1	Bearing
30	23301A	1	Fan	82	67317A	1	Shaft-Idler
31	61602A	1	Collar	83	34222A	1	Gasket - Pan Dust
33	902567	1	Bearing Ball	84	980651	3	Washer - 1 1/2 x 1 1/60 x 1/16
34	65302A	1	Key - 1/8 x 1/2 #3 Woodruff	85	85811A	3	Screw- 3/8-18 x 3/4
35	67411A	1	Shaft-Fan	86	962103	2	Screw- 5/16-18 x 3/8
36	67414A	1	Shaft- Drum Cover	87	962216	4	Screw- 3/8-16 x 1/4
37	67911A	1	Spring	88	962870	1	Screw- 3/8-16 x 1
38	13501A	1	Drum-RM	89	64460A	1	Handle Motor
39	67425A	1	Shaft Drum	90	32357A	2	Cover Handle
[]	18601A	1	Shaft Assembly Drum(includes 56, 39, 71)	91	930087	2	Rivet
41	67313A	1	Spacer - Drum Bearing	92	74044A	1	Plate Safety
42	66918A	1	Retainer - Bearing	93	697502	1	Strain Relief
45	962983	4	Screw- ¼-20 x 5/8 Pn St Mach	94	41305A	2	Capacitor Start
46	34225A	1	Gasket - Plate Support	95	41304A	1	Capacitor Run
47	26503C	1	Plate Support - Fan	96	47378A	1	Switch Start
48	51111A	1	Bearing Ball	97	962823	2	Screw- ¼-20 x ½
49	62001A	1	Cap-Bearing	98	980614	2	Washer
[]	38109A	1	Seal Dust Pipe	99	45604A	1	Plug Locking
51	980657	7	Washer - 17/64 l x 31/64 0 x 1/8	100	41945A	1	Cord Motor
				101	915098	1	Key ¼-52 x 1½
				102	57712A	1	Ring Retaining
				103	87034A	1	Retainer Pulley
				104	962288	1	Screw 3/8-16 x 1
				105	67642A	4	Shim, Motor
							Motor Parts Not Illustrated
				[]	50563A	1	End Bell
				[]	52768A	1	Front Cover
				[]	53998A	1	Fan
				[]	52769A	1	Fan Cover
				[]	51188A	1	Bearing Front
				[]	902547	1	Bearing Rear
				[]	40316A	1	Armature Assembly

[] = Not Shown

Base Assembly - 2



Base Assembly - 2

Item	Ref. No.	Qty	Description	Item	Ref. No.	Qty	Description
1	962052	1	Screw - 10-24 x 1/2 Fit St Mach	37	67821A	1	Spacer
2	962161	2	Screw - 10-24 x 3/4 St St Cuppt	38	81102A	2	Nut, 1/4-20 ESNA
3	25200C	1	Knob - Hand	39	29403C	1	Yoke, Wheel
4	66912A	1	Retainer, Screw Adjusting	40	60101A	3	Axle
5	67309A	1	Screw	41	87101A	3	Washer
6	67315A	2	Screw	42	51071A	1	Bracket, Latch
7	87000A	1	Washer	43	920160	1	Nut 5/16 -18
8	67905A	1	Spring	44	86201A	1	Screw 5/16 -18 x 1"
9	66123A	2	Plunger, Spring	45	67143A	1	Rod, Control
10	67906A	2	Spring	46	920260	1	Nut 3/8 -16 x 5/16
11	67107A	1	Rod- Pivot	47	53917B	1	Clevis, Control Rod
12	23405B	1	Frame, Main	48	925036	1	Pin, Cotter 3/32 x 3/4
13	66628C	1	Plate, Cover Wheel	49	66503A	1	Pin, Fork
14	962015	6	Screw, 10-24 x 3/8 Pn St Mach	50	62000A	1	Nut, End
15	980650	6	Washer, Lock	51	67412A	1	Shaft, Control
16	62801A	1	Eccentric	52	21101A	1	Bracket, Truck Wheel
17	87007A	1	Washer, Control Shaft Eccentric	53	60547A	2	Axle NOTE 1
18	980614	1	Washer, #1114 Shakeproof	54	56106070	6	Bearing, Ball
19	85700A	1	Screw, 1/4-20 x 1" Hex	55	167312	2	Ring, Retainer NOTE 1
20	70224B	1	Kit Guard, Belt	56	NB075100	2	Washer, 5/8 ID X 1 OD X 1/40 NOTE 1
21	60715B	1	Bolt, Pivot	57	50992A	2	Wheel, Asm. NOTE 1
22	87003A	4	Washer, 59/100 x 1 x 5/100 Flat	58	54000A	2	Fitting, Lub
23	67812A	1	Spacer, Bracket	59	57101A	1	Plug, Soft
24	51069A	1	Tube, Latch	60	60544A	2	Spacer
25	962823	3	Screw, 1/4-20 x 1/2 Pn St Mach	62	67810A	2	Spacer
26	980657	4	Washer, 17/64 l x 31/64 O x 1/16	63	920196	3	Nut, 1/2- 13
27	920112	2	Nut, #6-32 Hex	64	59928A	3	Wheel (Steel) NOTE 2
28	980607	2	Washer, #1106 Shakeproof	[]	10243A	-	Kit, Wheel (Urethane)(Optional)
29	66627A	1	Cover, Truck Wheel	65	67817A	1	Spacer NOTE 2
30	87004A	2	Washer, Fit St	66	81209A	1	Nut, 1/2-13 Flange
31	61600A	1	Clip, Dust 5	67	85806A	1	Screw, 1/4-20 x 3/4
32	962983	1	Screw, 1/4-20 x 5/8 Pn St Mach	68	87007A	1	Washer, 1/4-3/4 x 59/1000
33	63904A	1	Clamp, Belt Guard	69	61333A	2	Wheel, Caster 4" NOTE 1
34	85313C	2	Screw, 6-32 x 3/8 Pn St Mach	70	51226A	4	Bearing NOTE 1
35	66913A	1	Retainer Bearing	71	747304	2	Ring, Retaining NOTE 1
36	51112A	2	Bearing, Ball	72	61355A	2	Spacer NOTE 1

[] = Not Shown

NOTE 1: Only used on models 07105A & 07106A.

NOTE 2: Only used on models 07032C & 07048C.

Accessories

Ref. No.	Qty	Description
53560A	1	Operators Leather Belt
59810A	2	Wrench, End 5/16 x 7/16
59815A	1	Wrench 5/32
64415A	1	Handle-Carrying
42201A	1	Cordset- Hard Service 100FT
42200A	1	Cord Set-Hard Service
68315A	1	Template
56383241	3	Steel Wheel AM 8/12 Asm Kit
10243A	3	Wheel Asm Urethane
30088A	1	Skid Transport

Limited Warranty

American 8

TO QUALIFY FOR THIS WARRANTY

- (1) Machine must be registered within 30 days from the time of purchase on a form provided by American Sanders. Your American Sanders Distributor is responsible for the registration of your machine. Please cooperate with your Distributor in supplying necessary information on the card.
- (2) The machine must have been purchased from American Sanders or an authorized American Sanders Distributor.
- (3) This warranty extends to the original purchaser only and is not transferable to subsequent owners.

TIME PERIODS

ONE (1) YEAR WARRANTY - For the EZ-Sand. Warranted to be free from defects in material and workmanship for a period of one (1) year from the date of purchase by the original owners. (See Exclusions)

EXCLUSIONS (*Not Covered by Warranty*)

- (1) Expendable wear items and parts that fail through normal wear by reason of their characteristics (cords, pads, grip face, wheels, carbon motor brushes, filters, bags, bearings, or other consumable parts).
- (2) This warranty does not extend to parts affected by misuse, neglect, abuse, accidents, damage in transit, overloading the capacity of the machine, failure due to lack of proper maintenance or care as described in the operating and maintenance instructions. All defective parts must be returned to the distributor for credit.
- (3) Minor adjustments, such as tightening of screws or bolts not connected with the replacement of parts, are not covered.
- (4) Repairs or alterations by an organization other than the factory or an Authorized Service Center are not covered and will void any American Sanders warranty as to the parts or systems repaired or altered by a non-authorized organization.

THE OBLIGATION OF AMERICAN SANDERS

- (1) The obligation of American Sanders under this warranty is limited to repairing or replacing, at its option, any part which is proven to be defective in material or workmanship under normal use for the applicable period stated above.
- (2) Warranty repairs will be made by your American Sanders Distributor without charge for parts and labor. They will be compensated with a warranty labor rate of \$45.00 per hour, for the first year of ownership.
- (3) Parts repaired or replaced under this warranty are warranted only during the balance of the original warranty period. All defective parts replaced under these warranties become the property of American Sanders.

WARRANTY SERVICE

To obtain warranty service, take your machine and proof of purchase to any authorized American Sander Distributor. American Sanders will not reimburse expenses for service calls or travel. For the Distributor in your area, call American Sanders Customer Service Department at 800-367-3550 or 336-372-8080. If you are dissatisfied with the service that you receive, call or write American Sanders Customer Service Department for further assistance.

INSTRUCTIONS AND CONDITIONS FOR WARRANTY REIMBURSEMENT

- Order replacement part: Orders will be processed and charged, as normal procedure.
- Call American Sanders for R/A number.
- You will need the Machine Serial Number and the Machine Model Number.
- Parts must be returned, accompanied with the R/A number to be eligible for warranty credit.
- All Warranty Parts will be shipped prepaid UPS Ground, any other method will be at the recipients expense.
- Freight on any Warranty Part after 30 days must be paid for by the Purchaser.
- Warranty labor rate is \$45.00 per hour.
- Credit will be issued upon completion of the above steps, at the above rates.

Transportation of hazardous waste or contaminated equipment is subject to various laws and regulations. In returning machines, parts, or accessories under this limited warranty, the end user must certify in writing that the machines, parts, or accessories being returned have not been used for handling, clean up, or disposal of hazardous waste or hazardous materials including but not limited to such things as asbestos, anthrax etc. or if the machines, parts, or accessories being returned have been used for handling, clean up, or disposal of hazardous waste or hazardous materials, then the end user must have the machines, parts or accessories decontaminated by licensed and qualified decontamination professionals and provide written certification of this decontamination signed by the decontamination professionals. These machines, parts or accessories are to be returned only to the local American Sanders Service Center for warranty service along with decontamination certification.

DISCLAIMER OF CONSEQUENTIAL

THERE ARE NO WARRANTIES THAT EXTEND BEYOND THE DESCRIPTION OF THE LIMITED WARRANTIES STATED WITHIN. NO OTHER WARRANTY, EXPRESSED OR IMPLIED, INCLUDING BUT NOT LIMITED TO ANY IMPLIED WARRANTY OF MERCHANTABILITY OR FITNESS FOR A PARTICULAR PURPOSE, IS MADE EXCEPT AS EXPRESSLY STATED HEREIN. ANY STATUTORY IMPLIED WARRANTIES, INCLUDING ANY WARRANTY OF MERCHANTABILITY OR FITNESS FOR A PARTICULAR PURPOSE, THAT ARE IMPOSED BY LAW DESPITE THE EXPRESS LIMITATION OR WARRANTIES ABOVE, ARE EXPRESSLY LIMITED TO THE DURATION OF THE WRITTEN WARRANTY. BUYER UNDERSTANDS, ACKNOWLEDGES AND AGREES THAT THE REMEDIES PROVIDED UNDER THIS LIMITED WARRANTY ARE THE SOLE AND EXCLUSIVE REMEDIES AVAILABLE TO THE BUYER. AMERICAN SANDERS DISCLAIMS ANY RESPONSIBILITY FOR LOSS OF USER TIME OF THE AMERICAN SANDERS MACHINE OR ANY OTHER INCIDENTAL OR CONSEQUENTIAL DAMAGES. THIS INCLUDES, BUT NOT LIMITED TO INDIRECT, SPECIAL OR CONSEQUENTIAL DAMAGES ARISING OUT OF OR IN CONNECTION WITH THE FURNISHING, PERFORMANCE, USE OF OR INABILITY TO USE THE MACHINE. ANY EXTENSIONS OF OR MODIFICATIONS MADE TO THIS WARRANTY BY A DEALER/DISTRIBUTOR OF AMERICAN SANDERS ARE THE SOLE RESPONSIBILITY OF THE DEALER/DISTRIBUTOR.

American Sanders reserves the right to change its warranty policy without notice.

Copyright 2018 American Sanders



American Sanders
an AMANO Company

1 Eclipse Rd ● PO Box 909
Sparta, North Carolina 28675 ● USA
www.pioneereclipse.com
www.americansanders.com

+1-336-372-8080
1-800-367-3550
Fax 1-336-372-2913