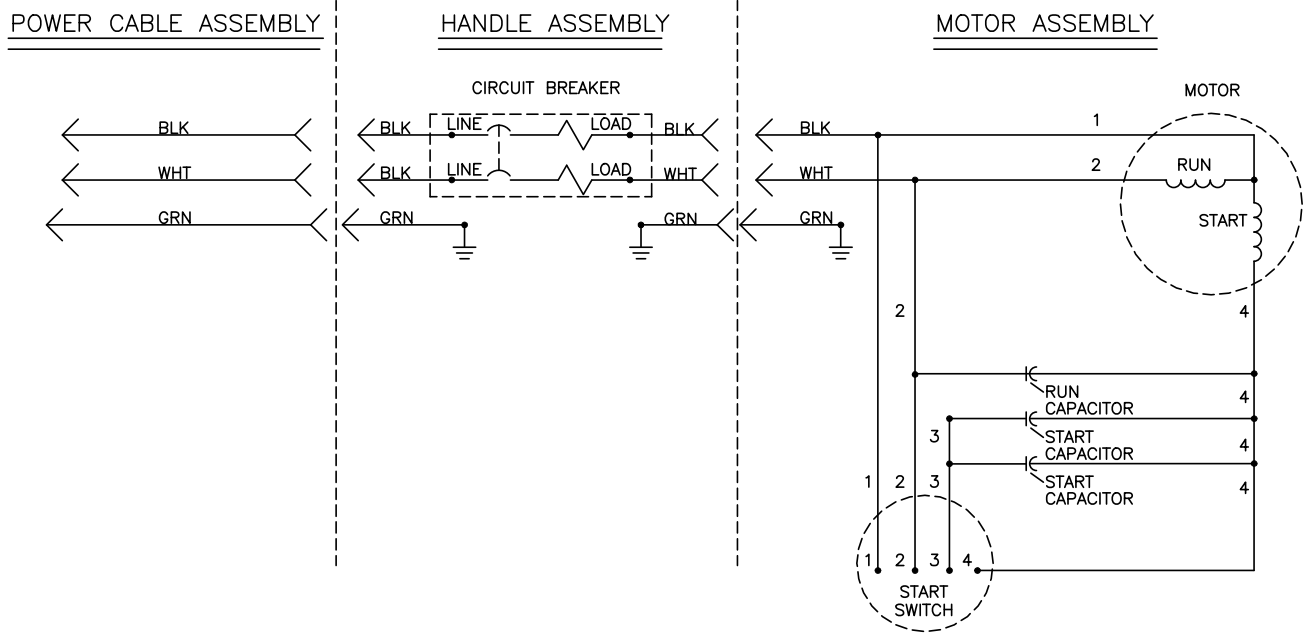
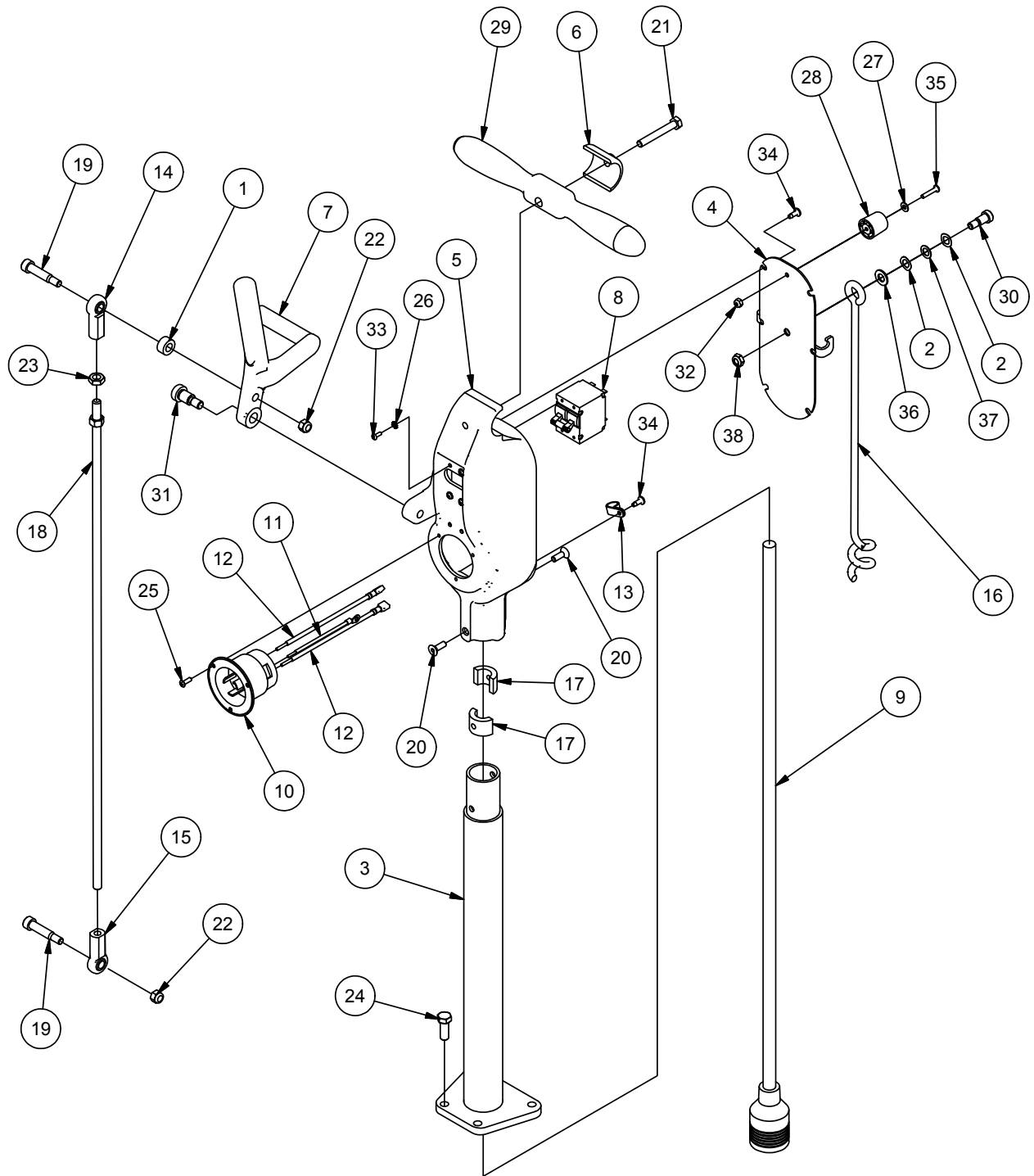


Wiring Diagram



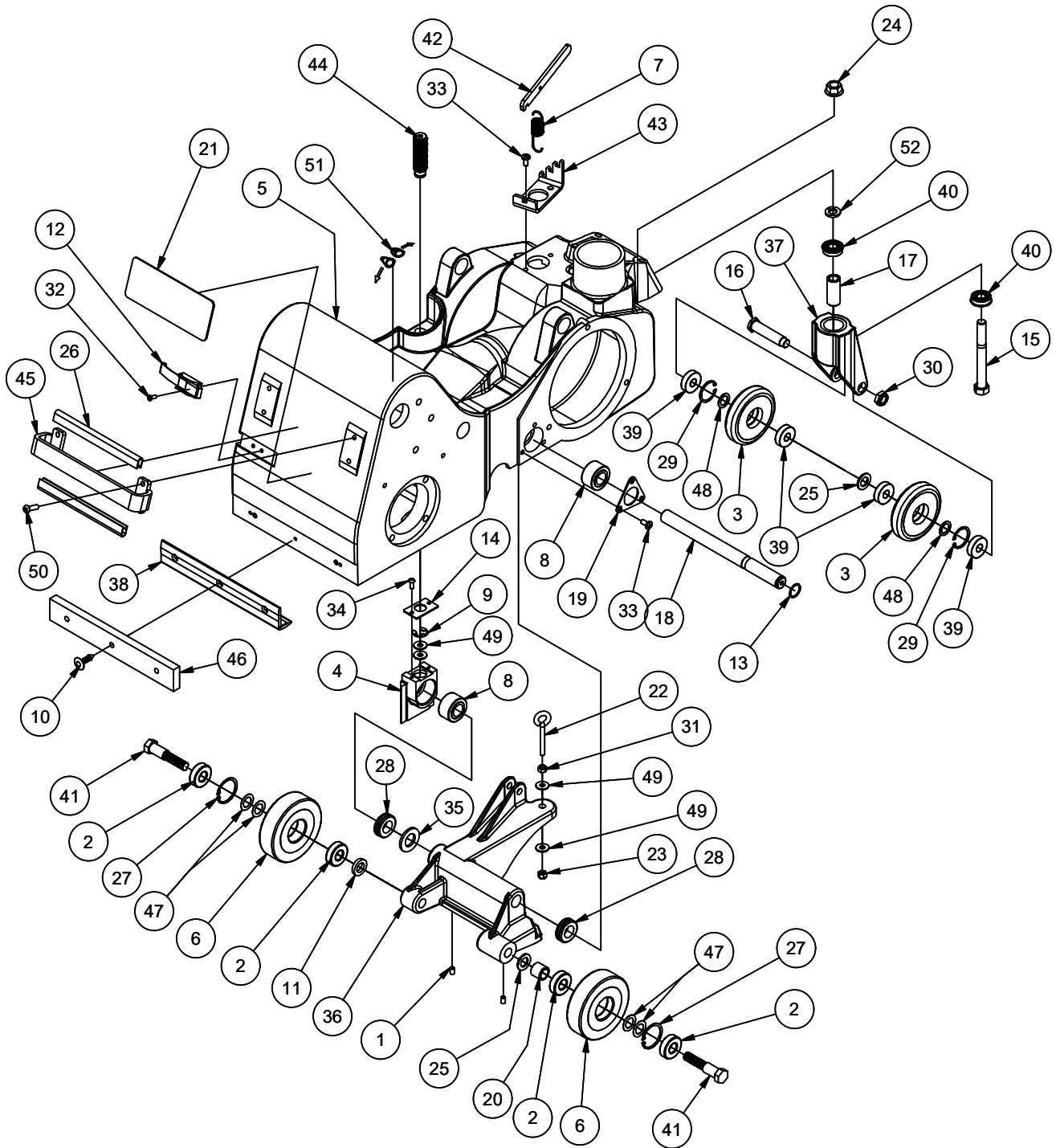
Handle Assembly



Handle Assembly

Item	Ref. No.	Qty	Description
1	898203	1	Spacer Rod End Hk-8
2	980022	2	Washer Wave
3	10145A	1	Mount Handle Control
4	10155A	1	Assy Cordholder
5	20016A	1	Switchbox Sander
6	21904C	1	Clamp Steering Handle - Black
7	25601A	1	Lever Control Classic 8
8	41411A	1	Circuit Breaker 30 Amp
9	41917A	1	Cord-Interconnecting
10	43501A	1	Inletflanged Nema L6-20p
11	48900A	1	Wire Assy
12	49023A	2	Wire Assembly
13	51074A	2	Clamp Cable
14	53537A	1	Rod End 3/8-24 R.H. Female
15	53538A	1	Rod End 3/8-24 L.H. Female
16	60372A	1	Arm Cord
17	60374A	2	Clamp Retainer
18	60387A	1	Rod Control
19	80035B	2	Bolt Shoulder 3/8 X 1 1/4
20	80132A	2	Screw 1/4-20x3/4 Fh Socket Hd
21	85818A	1	Screw 5/16-18 X 2 1/2 Hx Hd
22	920110	2	Nut, 5/16-18 Hex Lock
23	920204	1	Nut, 3/8-24 Hex Jam
24	962288	4	Bolt, 3/8-16 X 1.00 Hex Hd.
25	962727	3	Screw, 8-32 X 1/2
26	980607	4	Washer, #6 Lock External Tooth
27	980982	1	Washer 10 Sae Flat Pltd
28	51220A	1	Bumper, Plastic Non-Marking
29	64405A	1	Handle, Steering
30	80026A	1	Bolt Shoulder 3/8x1/2
31	NB071200	1	Screw, Shoulder, 1/2" x 5/8" x 3/8-16
32	81109A	1	Nut, 8-32 Esna S.S.
33	85313C	4	Screw Phms 6-32x3/8 Cross Recessed
34	85517A	10	Screw #10-24 X 1/2 PHCR TYPE 23
35	85613A	1	Screw, 8-32 X 7/8 P.H. S.S.
36	87618A	1	Washer, Flat .39 I.D. X .75 X .062
37	87619A	1	Washer, Flat .375 I.D. X .625 O.D.
38	81112A	1	Nut, 5/16-18 Thin ESNA S.S.
39	42200A	1	Cord Set-Hard Service <i>(Not Shown)</i>
	AS016800	1	Cord, Power, 100', 230V (Model 56380917) <i>(Not Shown)</i>

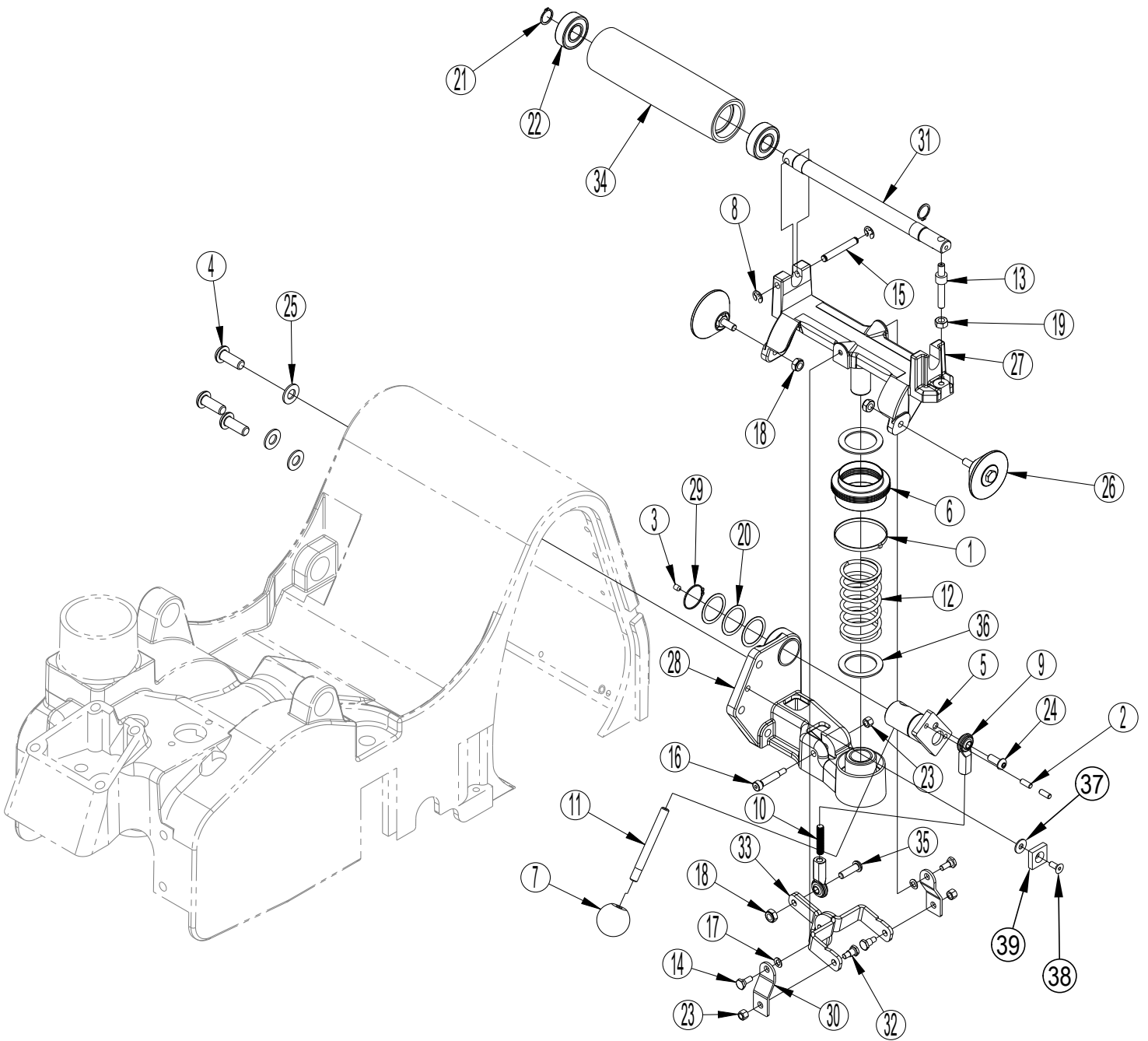
Base Assembly



Base Assembly

Item	Ref. No.	Qty	Description	46	60392A	1	Bumper, Front
1	962184	2	Scr 1/4 -20x 3/8 St St Knurl	47	NB075100	4	Washer .625 ID X 1.0 OD X.025 THK
2	56106070	4	Bearing, Ball	48	61355A	2	Spacer, Caster Wheel
3	19611A	2	Wheel Asm Caster 80 A	49	87007A	4	Washer Control Shaft
4	20019A	1	Bracket Leveling	50	80139A	4	Screw 1/4-20 X 7/8 BH
5	20022A	1	Mainframe Floorcrafter 8 (07014A, 07202A, 56380917)	51	AS015100	1	Decal, Direction, Belt Tension
	20022B	1	Mainframe FloorCrafter 8, Blk (07014B)	52	MX1105	1	Washer, Lock, 1/2"
6	50992A	2	Wheel Asm Truck				ACCESSORIES
7	51096A	1	Spring Pressure Adjust	*	53560A	1	Leather Operators Belt
8	51190A	2	Bearing Self-Aligning	*	50954A	1	Bag Dust Sanders
9	51203A	1	E-Ring Bowed .625 Dia	*	53718A	1	Adaptor 2 Hose Fitting
10	51219A	3	Rivet Nylon	*	30088A	1	Skid Transport
11	51339A	1	Spacer Truck Wheel	*	19611A	A/R	Wheel Asm Caster 80 A
12	52338A	1	Latch Draw Over-Center	*	19610A	A/R	Wheel Asm Truck 80 A
13	57714A	1	Ring Retaining 3/4 Shaft Di	*	50992A	A/R	Wheel Asm Truck
14	60351A	1	Plate Retaining	*	42200A	1	Cord Set-Hard Service
15	NB073400	1	Bolt, Hex, 1/2-13 x 4.5, GD 8	*	42201A	1	Cordset- Hard Service 100FT
16	60353A	1	Axle Wheel				* = Optional, Not Included
17	60355A	1	Spacer Caster Bearing				
18	60375A	1	Axle Truck				
19	66972A	1	Retainer Bearing Hk-8				
20	67817A	1	Spacer				
21	AS014800	1	Nameplate, FloorCrafter				
22	80119A	1	Bolt Eye-1/2 Id 1/4-20x3 Oal				
23	81102A	1	Nut Stop Elastic 1/4-20 Hex				
24	81209A	1	Nut Large Flange 1/2-13				
25	87003A	2	Washer .59x1.00x.09 Flat St				
26	97100A	1.25'	Trimvinylblack400 Ft. Spool				
27	167312	2	Ring, Retainer Internal				
28	193944	2	Grommet				
29	747304	2	Retaining Ring 1.250 Internal				
30	NB003100	1	Nut, Hex, 1/2"-13, Jam				
31	920208	1	Nut, 1/4-20 Hex				
32	962727	2	Screw, 8-32 X 1/2				
33	962823	5	Screw, 1/4-20 X 1/2 P.H.				
34	962911	2	Scr 10-24 X 1/2 Bt Ss				
35	980679	1	Washer, 3/4" S.A.E. Flat				
36	20017A	1	Control Carriage				
37	20024A	1	Yoke, Caster				
38	AS017200	1	Bumper, Corner				
39	51226A	4	Bearing, 6202 Sealed				
40	51279A	2	Flange Bearing				
41	51340A	2	Shaft, Truck Wheel				
42	60356A	1	Lever Pressure Adjust				
43	60357A	1	Bracket Pressure Adjust				
44	60380A	1	Screw Leveling				
45	60386A	1	Handle, Mainframe				

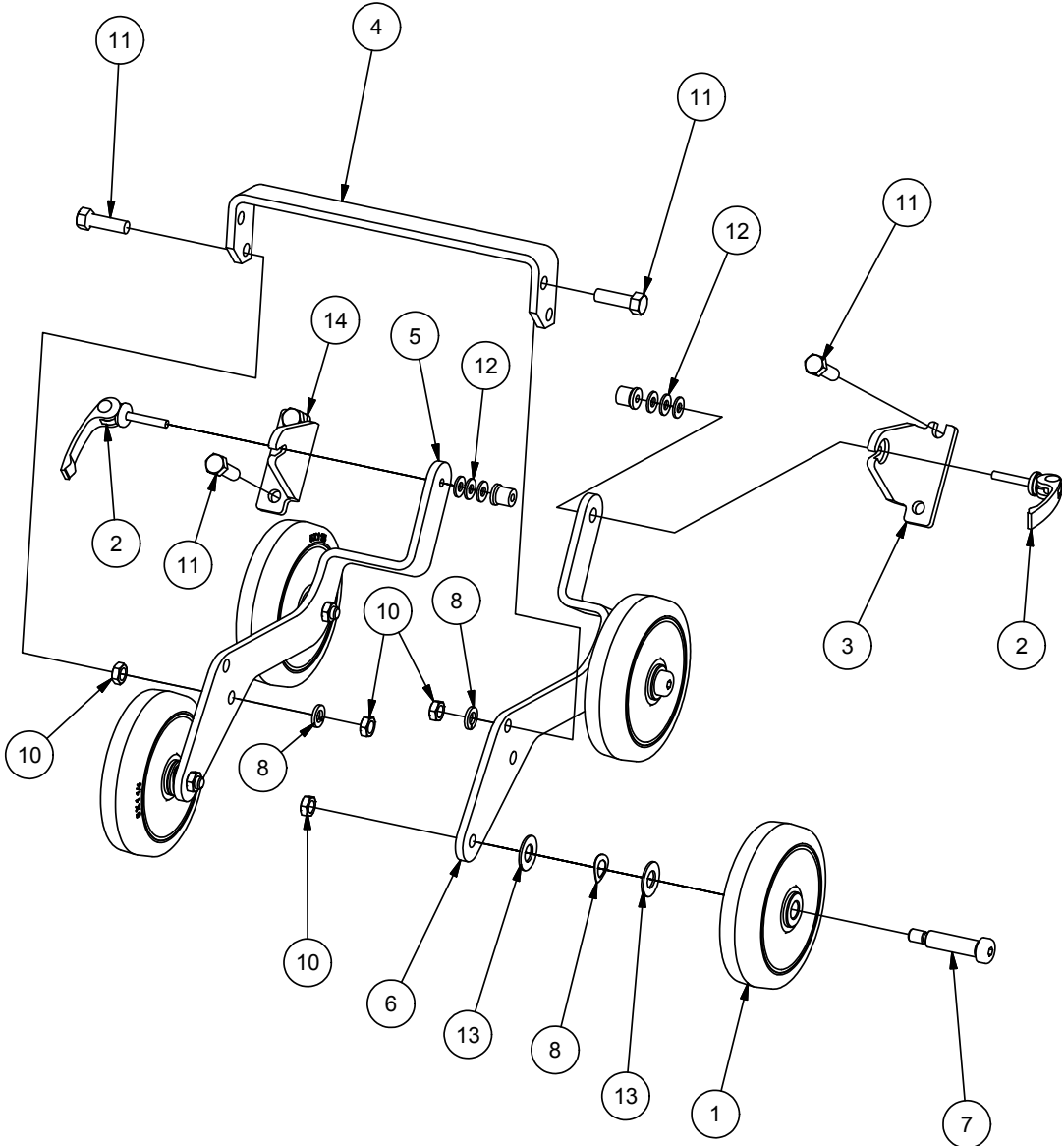
Belt Tensioner Assembly



Belt Tensioner Assembly

Item	Ref. No.	Qty	Description
1	699202	1	Wire Tie
2	925546	2	Pin-3/16x1/2 Roll
3	962165	1	Scr 10-24x 3/16 St St Cuppt
4	962870	3	Scr 3/8 -16x1 Bt St Allen
5	10247A	1	Cam Release Weldment
6	30087A	1	Boot-Belt Tensioning Asm
7	51099A	1	Knob Release
8	51211A	2	E-Ring .25 Dia
9	51216A	2	Rod End Female
10	51221A	1	Link Connecting
11	60364A	1	Lever Tension Release
12	60379A	1	Spring Abrasive Tension
13	60381A	1	Adjuster Tracking
14	60395A	2	Screw Link Retaining
15	60396A	1	Pin Roller Shaft
16	80020A	1	Bolt Shoulder 1/4 X 1
17	80140A	2	Washer 5mm Bowed
18	81217A	3	Nut, 1/4-20 Hex Esna
19	81303A	1	Nut 1/4-28
20	87052A	3	Washer Flt 1.25x1.00x.020nylon
21	747380	2	Ring Roller Retaining
22	902567	2	Bearing Balldouble Sealed
23	920296	3	Nut 10-24 Elastic Stop
24	962822	1	Screw 1/4-20 X 5/8 Bt St Soc
25	980645	3	Washer, 3/8" S.A.E. Flat
26	14704A	2	Guide Roller Asm C-12
27	20018A	1	Carriage Tension Roller
28	20020A	1	Support Tension Asm
29	51277A	1	Ring,Retaining,Ext.,1.00
30	60382A	2	Link, Draw
31	60383A	1	Shaft Tension Roller
32	60391A	2	Screw, Link Retaining
33	60393A	1	Lever Draw
34	67201B	1	Roller Tension 8" Belt Sander
35	80139A	1	Scr, 1/4-20 X 7/8 Button Hd
36	80422A	2	Wear Washer
37	87007A	1	Washer-Control Shaft Eccentric (only used prior to March 2009)
38	962505	1	Scr 1/4 -20x 5/8 Sf St Cap (only used prior to March 2009)
39	60906A	1	Block Wear Ez-8 (only used prior to March 2009)

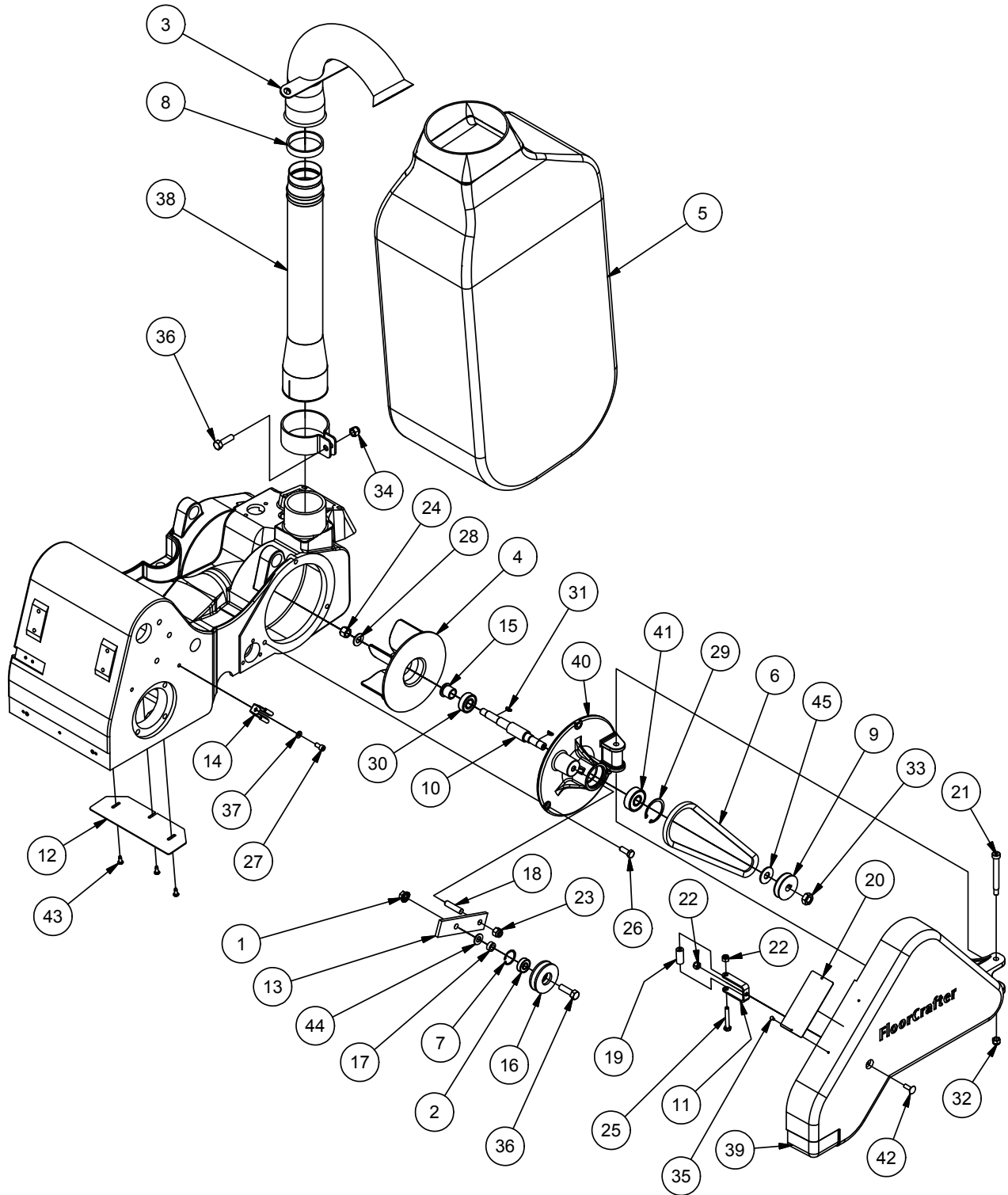
Dolly Assembly



Dolly Assembly

Item	Ref. No.	Qty	Description
	10392A	1	Dolly Assembly Floorcrafter (all items except 3 & 14)
1	39857A	4	Wheel 5 X 1.50 X .500
2	51372A	2	Skewer, Quick Release
3	60346A	1	Bracket Right Mounting
4	60347A	1	Brace Dolly
5	60348A	1	Bracket Right
6	60349A	1	Bracket Left
7	80047A	4	Boltshoulder 1/2dia X 1-3/4
8	87627A	4	Washer.875 O.D. Bowed
9	170883	4	Washer, Lock 3/8"
10	920260	10	Nut, 3/8-16 Hex
11	962216	8	Screw, 3/8-16 X 1 1/4 Hex.
12	980646	6	Washer 1/4 Sae Flat Pltd
13	980648	8	Washer 17/32 X 1 1/16 Plain
14	60345A	1	Bracket, Dolly Left

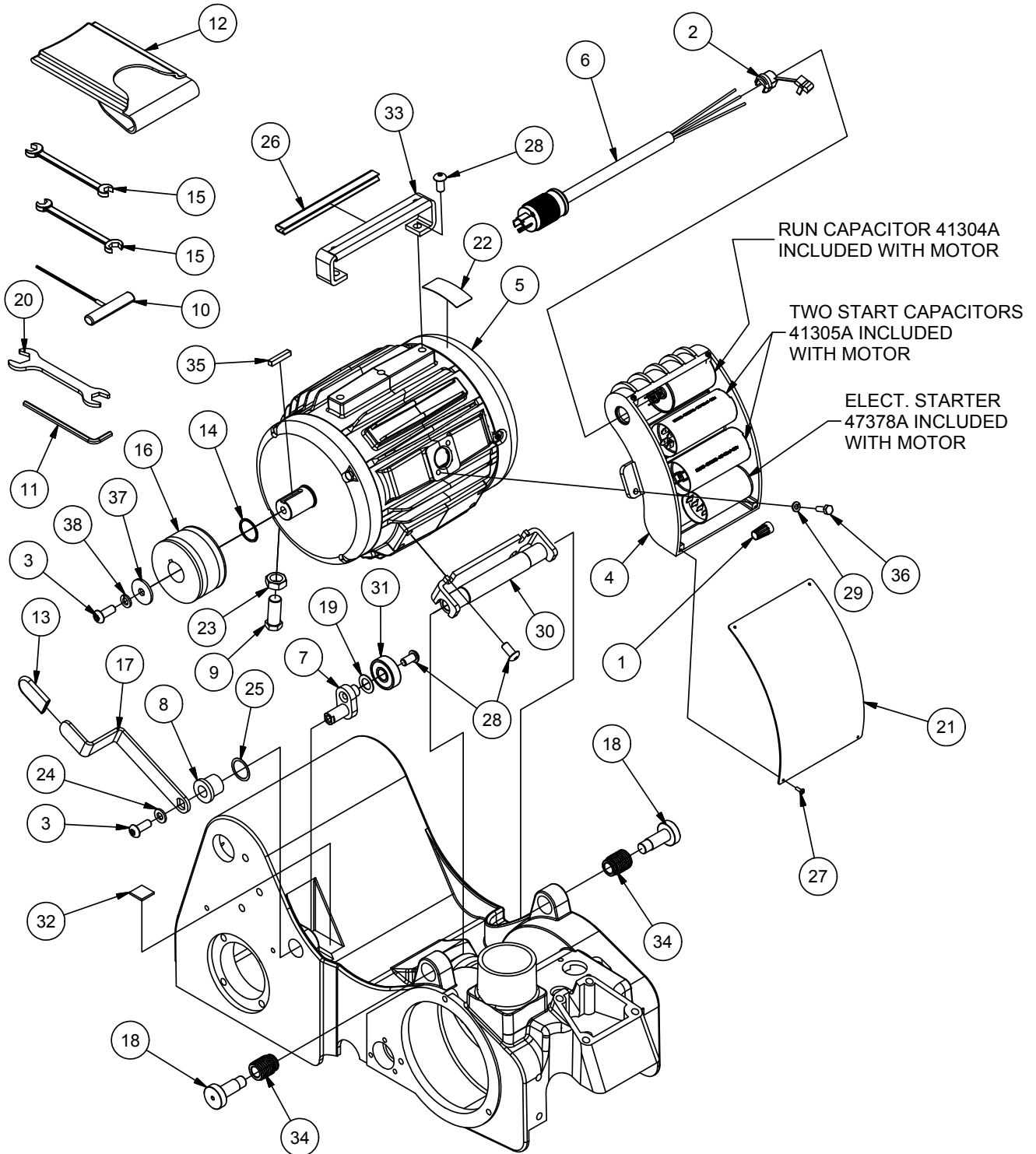
Dust Control Assembly



Dust Control Assembly

Item	Ref. No.	Qty	Description
1	171101	1	Nut Lk-Flange 3/8-16 Pltd
2	902619	1	Bearing 580/590 Tb16
3A	10142A	1	Assy Duct Tube Elbow
3B	53718A	1	Vacuum Hose 2" Adapter (Optional)
4	23301A	1	Fan
5	50954A	1	Bag Assy-Dust
6	51039A	1	Belt Fan
7	57801A	1	Ring-Snap 26x1.2
8	60342A	1	Seal Felt
9	60366A	1	Pulley Fan
10	60370A	1	Shaft Fan
11	60384A	1	Bracket Latch
12	60397A	1	Cover Dust Throat
13	60414A	1	Armidlerpntd8 Belt Sander
14	61600A	1	Clip-Dust
15	61602A	1	Collar
16	66170A	1	Pulley Idler -3l Classic 8
17	67875A	1	Spacer Classic 8
18	68010A	1	Studidler Arm8 Belt Sander
19	68393A	1	Tubelatchpntd8 Belt Sander
20	74045A	1	Platedangermoving Partsclas
21	80017A	1	Bolt Shoulder 3/8 X 2 3/4
22	81102A	2	Nut Stop Elastic 1/4-20 Hex
23	81108A	1	Nutex Elastic Lock3/8-24
24	81202A	1	Nut 7/16-14 Hx St Lh
25	85702A	1	Scr 1/4 -20x1&3/4 Hx St Cap
26	85812A	3	Screw5/16-18 X 7/8 Hex Hd Gr5
27	86111A	1	Screw1/4-20 X 1/2socket Head
28	87002A	1	Washerflat
29	877304	1	Ring Retaining Internal
30	902567	1	Bearing Balldouble Sealed
31	915561	2	Key 1/8x1/2 Woodruff
32	920110	1	Nut, 5/16-18 Hex Lock
33	920196	1	Nut 1/2-13 Hex Jam
34	920342	1	Nut Esna 3/8-16
35	930093	2	Rivet, Pop, 1/8 X 1/4-5/16 Pop Steel
36	962216	2	Screw, 3/8-16 X 1 1/4 Hex.
37	980657	1	Washer, Lock 1/4
38	10144A	1	Assembly Dust Tube
39	20023A	1	Guard, Belt Assy (07014A, 07202A, 56380917)
	20023B	1	Guard, Belt Assy, Blk (07014B)
40	20026A	1	Cover, Fan (07014A, 07202A, 56380917)
	20026B	1	Guard, Fan, Blk (07014B)
41	51111A	1	Bearingball
42	80131A	1	Carriage Bolt
43	85517A	3	Screw #10-24 X 1/2 PHCR TYPE 23
44	MX1080	1	Washer, Flat, 3/8
45	NB9269	1	Washer, Flat, 7/16

Motor Assembly

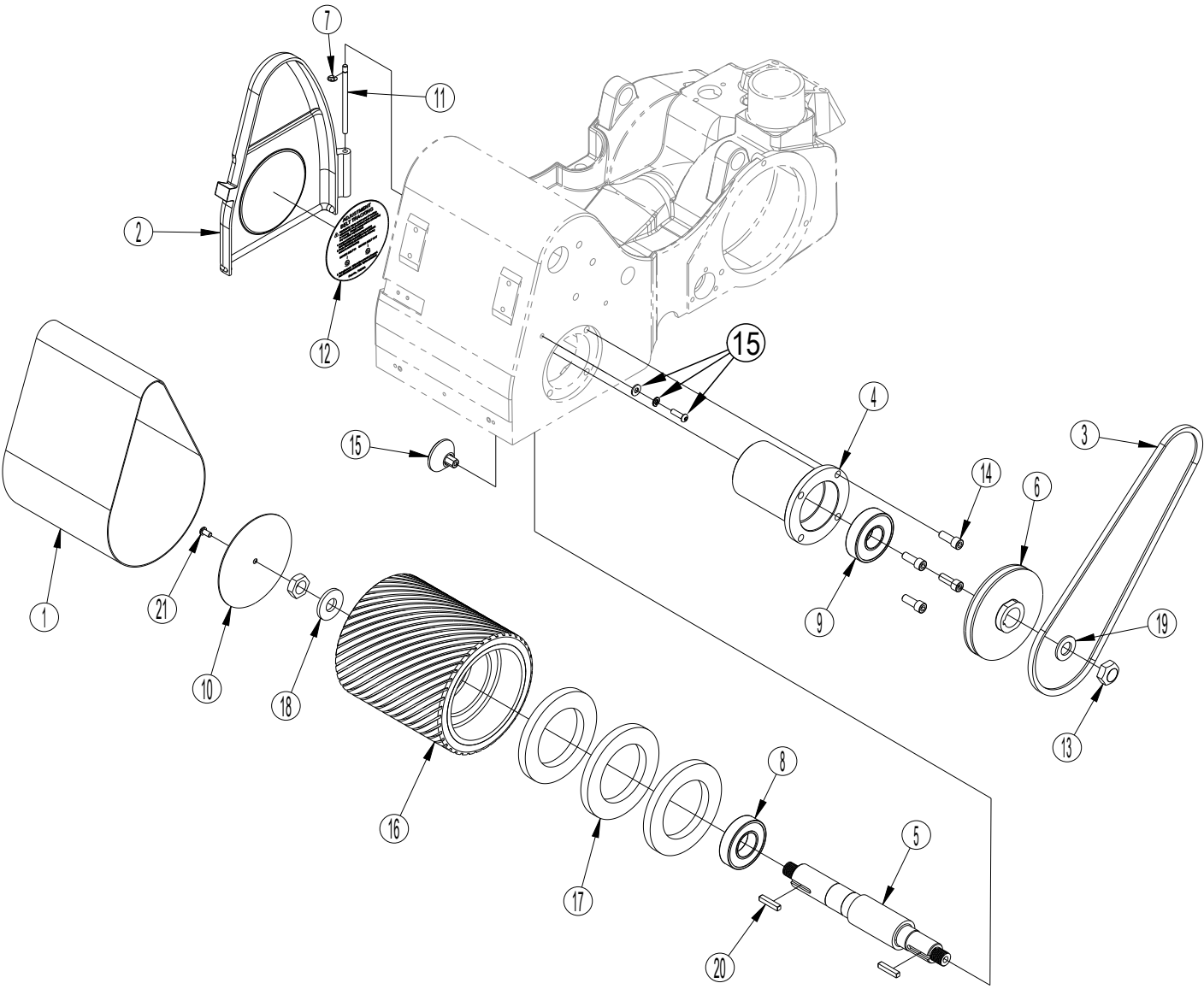


Motor Assembly

Item	Ref. No.	Qty	Description
1	170674	2	Connectorwire Nut-Red
2	697502	1	Strain Relief-Bushing Sr 8I-1
3	962870	2	Scr 3/8 -16x1 Bt St Allen
4	22904A	1	Enclosuremtr Strtpntd Apoll
5A	40151A	1	Motor 4HP (model 07104A)
5B	56380883	1	Motor 4 HP 240V/50 HZ (model 56380917)
6	41945A	1	Cordmotorclassic 8
7	51093A	1	Cam Belt Release
8	51215A	1	Bearing Flange 5/8x1x1
9	51222A	1	Screw Belt Tensioning
10	51273A	1	Key Hex 3/32
11	51274A	1	Key Hex 7/32
12	51347A	1	Pouch Tool
13	52421A	1	Pad Stop
14	57712A	1	Ringretainingmotor Shaft8
15	59810A	2	Wrench-Paper Clamp 9/16 X 7/16
16	60365A	1	Sheave Motor
17	60368A	1	Lever Belt Tensioning
18	60476A	2	Pin Motor Mount
19	60482A	1	Spacer
20	60498A	1	Wrench 15/16 X 3/4 Open
21	73715A	1	Plate Elec/Fire Warning Hk-8
22	77234A	1	Labelwarningheavy Object
23	80138A	1	Nut Jam 5/8-11
24	87000A	1	Washer .39x.75x.09 Flat St
25	87052A	1	Washer Flt 1.25x1.00x.020nylon
26	97100A	1.25'	Trim, Vinyl, Black 400 Ft. Spool
27	962330	4	Screw, 6-32 X 3/8 Pan Hd.
28	962565	7	Screw, 6-32 X 3/8 Pan HD
29	980657	2	Washer, Lock 1/4
30	10173A	1	Assy, Motor Mount
31	51111A	1	Bearingball
32	52420A	1	Cover, Lever
33	60350A	1	Handle, Mainframe
34	60394A	1	Key Square .250 X 1.38
35	60475A	2	Fastener, Motor
36	85806A	2	Screw, 1/4-20 X 3/4 Hex Sz
37	87034A	1	Retainer, Motor Pulley
38	MX1075	1	Washer, Lock, 3/8
*	10332A	1	Belt Sander Tool Kit (10, 11, 12, 15, 20)

* = Optional, Not Included

Sanding Drum Assembly



Sanding Drum Assembly

Item	Ref. No.	Qty	Description
1	56382754	1	Beltabrasive100grt 8sndrs Cs=5
2	20021A	1	Access Door (07014A, 07202A, 56380917)
	20021B	1	Access Door, Blk (07014B)
3	51024A	1	Belt Drive
4	51051A	1	Bearing Carrier
5	51052A	1	Shaft Arbor
6	51053A	1	Pulley Drum
7	51211A	1	E-Ring .25 Dia
8	51223A	1	Bearing Ball
9	51224A	1	Bearing Ball
10	60376A	1	Plate Drum End
11	60389A	1	Pin Hinge
12	70236A	1	Label Belt Tracking
13	81106A	2	Nutex Lock3/4-10
14	86110A	4	Screw-3/8-16 X 1-Socket Head
15	10958A	1	Roller Asm.
16	20015A	1	Wheel Contact
17	30675A	3	Dust Shield
18	60377A	1	Retainer Contact Wheel
19	60378A	1	Retainer Drum Pulley
20	60394A	2	Key Square .250 X 1.38
21	87700A	1	Screw 1/4-20 X 1/2 B.H.

Limited Warranty

FloorCrafter

TO QUALIFY FOR THIS WARRANTY

- (1) Machine must be registered within 30 days from the time of purchase on a form provided by American Sanders. Your American Sanders Distributor is responsible for the registration of your machine. Please cooperate with your Distributor in supplying necessary information on the card.
- (2) The machine must have been purchased from American Sanders or an authorized American Sanders Distributor.
- (3) This warranty extends to the original purchaser only and is not transferable to subsequent owners.

TIME PERIODS

ONE (1) YEAR WARRANTY - For the FloorCrafter.
Warranted to be free from defects in material and workmanship for a period of one (1) year from the date of purchase by the original owners. (See Exclusions)

EXCLUSIONS (Not Covered by Warranty)

- (1) Expendable wear items and parts that fail through normal wear by reason of their characteristics (cords, drums, belts, wheels, bearings, filters, bags, or other consumable parts).
- (2) This warranty does not extend to parts affected by misuse, neglect, abuse, accidents, damage in transit, overloading the capacity of the machine, failure due to lack of proper maintenance or care as described in the operating and maintenance instructions. All defective parts must be returned to the distributor for credit.
- (3) Minor adjustments, such as tightening of screws or bolts not connected with the replacement of parts, are not covered.
- (4) Repairs or alterations by an organization other than the factory or an Authorized Service Center are not covered and will void any American Sanders warranty as to the parts or systems repaired or altered by a non-authorized organization.

THE OBLIGATION OF AMERICAN SANDERS

- (1) The obligation of American Sanders under this warranty is limited to repairing or replacing, at its option, any part which is proven to be defective in material or workmanship under normal use for the applicable period stated above.
- (2) Warranty repairs will be made by your American Sanders Distributor without charge for parts and labor. They will be compensated with a warranty labor rate of \$45.00 per hour, for the first year of ownership.
- (3) Parts repaired or replaced under this warranty are warranted only during the balance of the original warranty period. All defective parts replaced under these warranties become the property of American Sanders.

WARRANTY SERVICE

To obtain warranty service, take your machine and proof of purchase to any authorized American Sander Distributor. American Sanders will not reimburse expenses for service calls or travel. For the Distributor in your area, call American Sanders Customer Service Department at 800-367-3550 or 336-372-8080. If you are dissatisfied with the service that you receive, call or write American Sanders Customer Service Department for further assistance.

INSTRUCTIONS AND CONDITIONS FOR WARRANTY REIMBURSEMENT

- Order replacement part: Orders will be processed and charged, as normal procedure.
- Call American Sanders for R/A number.
- You will need the Machine Serial Number and the Machine Model Number.
- Parts must be returned, accompanied with the R/A number to be eligible for warranty credit.
- All Warranty Parts will be shipped prepaid UPS Ground, any other method will be at the recipients expense.
- Freight on any Warranty Part after 30 days must be paid for by the Purchaser.
- Warranty labor rate is \$45.00 per hour.
- Credit will be issued upon completion of the above steps, at the above rates.

Transportation of hazardous waste or contaminated equipment is subject to various laws and regulations. In returning machines, parts, or accessories under this limited warranty, the end user must certify in writing that the machines, parts, or accessories being returned have not been used for handling, clean up, or disposal of hazardous waste or hazardous materials including but not limited to such things as asbestos, anthrax etc. or if the machines, parts, or accessories being returned have been used for handling, clean up, or disposal of hazardous waste or hazardous materials, then the end user must have the machines, parts or accessories decontaminated by licensed and qualified decontamination professionals and provide written certification of this decontamination signed by the decontamination professionals. These machines, parts or accessories are to be returned only to the local American Sanders Service Center for warranty service along with decontamination certification.

DISCLAIMER OF CONSEQUENTIAL

THERE ARE NO WARRANTIES THAT EXTEND BEYOND THE DESCRIPTION OF THE LIMITED WARRANTIES STATED WITHIN. NO OTHER WARRANTY, EXPRESSED OR IMPLIED, INCLUDING BUT NOT LIMITED TO ANY IMPLIED WARRANTY OF MERCHANTABILITY OR FITNESS FOR A PARTICULAR PURPOSE, IS MADE EXCEPT AS EXPRESSLY STATED HEREIN. ANY STATUTORY IMPLIED WARRANTIES, INCLUDING ANY WARRANTY OF MERCHANTABILITY OR FITNESS FOR A PARTICULAR PURPOSE, THAT ARE IMPOSED BY LAW DESPITE THE EXPRESS LIMITATION OR WARRANTIES ABOVE, ARE EXPRESSLY LIMITED TO THE DURATION OF THE WRITTEN WARRANTY. BUYER UNDERSTANDS, ACKNOWLEDGES AND AGREES THAT THE REMEDIES PROVIDED UNDER THIS LIMITED WARRANTY ARE THE SOLE AND EXCLUSIVE REMEDIES AVAILABLE TO THE BUYER. AMERICAN SANDERS DISCLAIMS ANY RESPONSIBILITY FOR LOSS OF USER TIME OF THE AMERICAN SANDERS MACHINE OR ANY OTHER INCIDENTAL OR CONSEQUENTIAL DAMAGES. THIS INCLUDES, BUT NOT LIMITED TO INDIRECT, SPECIAL OR CONSEQUENTIAL DAMAGES ARISING OUT OF OR IN CONNECTION WITH THE FURNISHING, PERFORMANCE, USE OF OR INABILITY TO USE THE MACHINE. ANY EXTENSIONS OF OR MODIFICATIONS MADE TO THIS WARRANTY BY A DEALER/DISTRIBUTOR OF AMERICAN SANDERS ARE THE SOLE RESPONSIBILITY OF THE DEALER/DISTRIBUTOR.

American Sanders reserves the right to change its warranty policy without notice.

Copyright 2018 American Sanders



American Sanders

an AMANO Company

1 Eclipse Rd ● PO Box 909
Sparta, North Carolina 28675 ● USA
www.pioneereclipse.com
www.americansanders.com

+1-336-372-8080
1-800-367-3550
Fax 1-336-372-2913